

The Single European Code (SEC)
 The SEC consists of three parts:
 <D-IS> <space> <P-IS>
 D-IS = donation identification sequence
 P-IS = product identification sequence

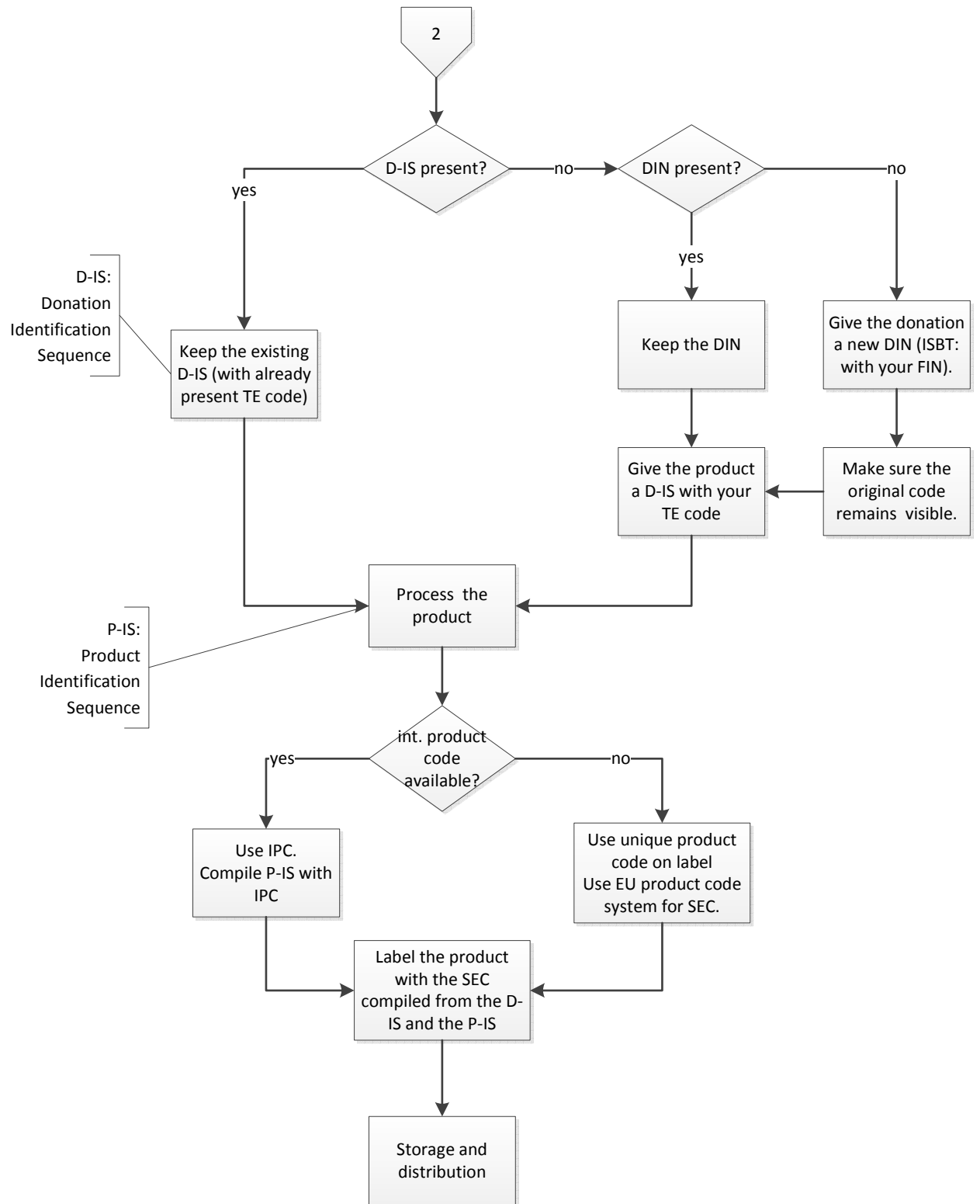
D-IS
 <Country><Tissue establishment code><donation identification number>
 Example: NL108514N000115123456

P-IS
 <Product code system><Productcode><split number><expiry date>
 Example: A00T000100020181231

This document is an interpretation of the European law, made by Sanquin and is for discussion purposes only. Sanquin is not responsible for any errors in or decisions based on this document. Every Tissue Establishment must define its own situation.
 Contact: Petra van Krimpen (p.vankrimpen@sanquin.nl)

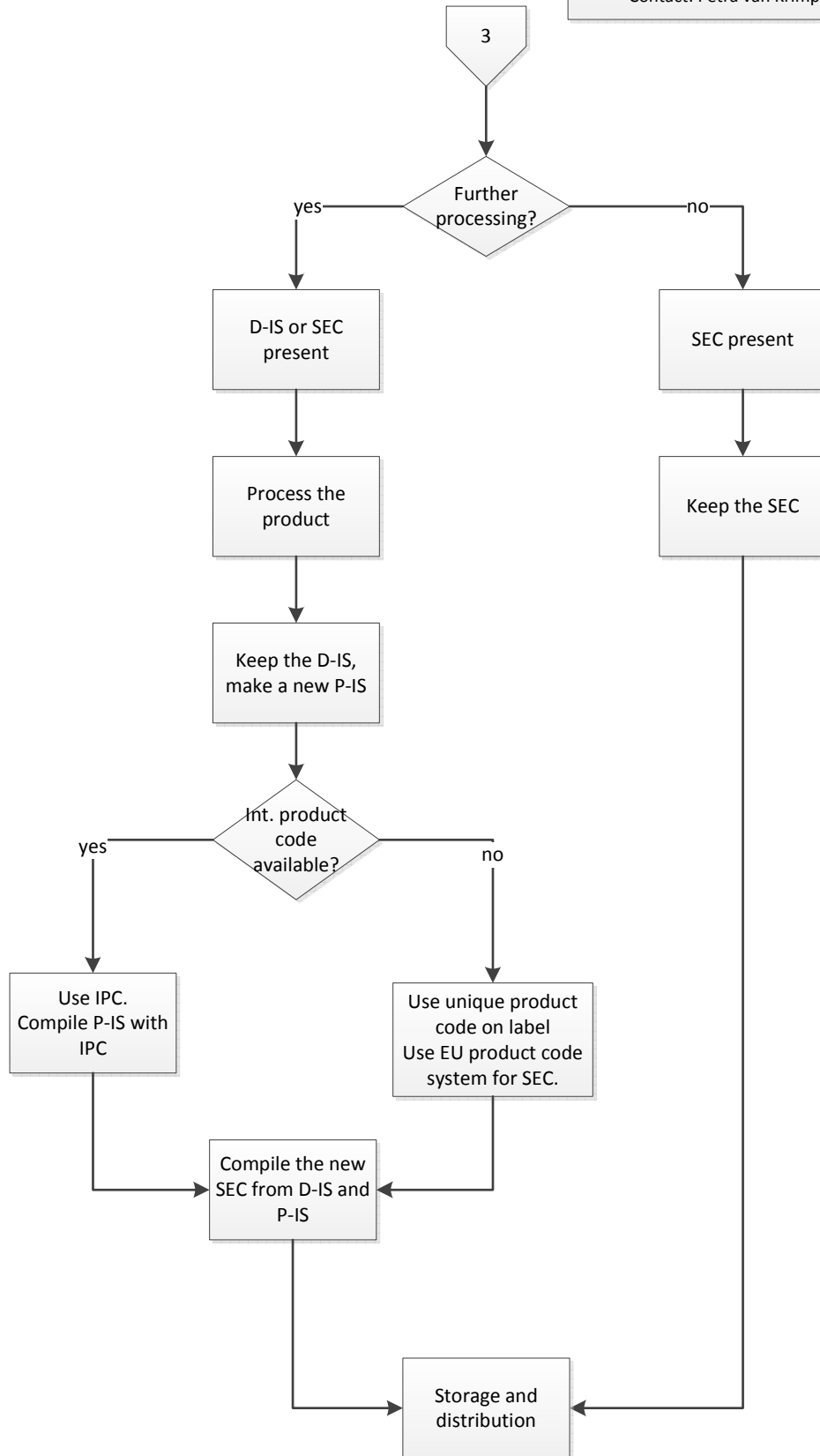
Donation before processing

This document is an interpretation of the European law, made by Sanquin and is for discussion purposes only. Sanquin is not responsible for any errors in or decisions based on this document. Every Tissue Establishment must define its own situation.
Contact: Petra van Krimpen (p.vankrimpen@sanquin.nl)



Product from TE within the EU

This document is an interpretation of the European law, made by Sanquin and is for discussion purposes only. Sanquin is not responsible for any errors in or decisions based on this document. Every Tissue Establishment must define its own situation.
Contact: Petra van Krimpen (p.vankrimpen@sanquin.nl)



Import donation or product from outside EU

This document is an interpretation of the European law, made by Sanquin and is for discussion purposes only. Sanquin is not responsible for any errors in or decisions based on this document. Every Tissue Establishment must define its own situation.
Contact: Petra van Krimpen (p.vankrimpen@sanquin.nl)

